



Choroideremia
RESEARCH FOUNDATION



**CHM MAINTAINS
A HEALTHIER
OPTIC NERVE.**

**THE OPTIC NERVE
IS MUCH PALER
IN RP.**



**CHM CONTAINS
A HEALTHIER
VASCULAR
SYSTEM.**

**BLOOD VESSELS
THINNER IN RP.**



**THERE IS A
GREATER
PREVALENCE OF
BONY SPICULES
IN RP VS CHM.**

(800)210-0233, EXT. 1

INFO@CURECHM.ORG

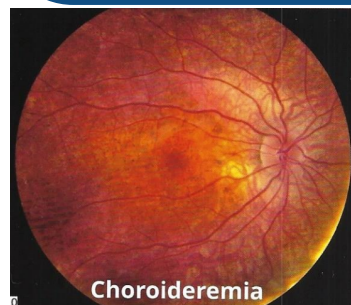
WWW.CURECHM.ORG

CHOROIDEREMIA FAST FACTS

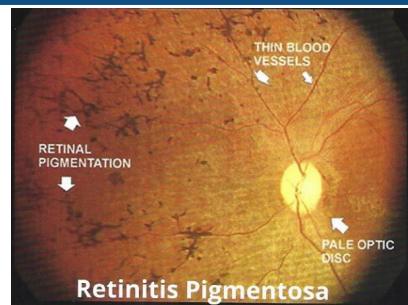
- EST 70% OF CHM AFFECTED PATIENTS ARE INITIALLY DIAGNOSED AS HAVING OTHER RETINAL DISEASES
- FEMALES WITH CHM TYPICALLY EXHIBIT Milder SYMPTOMS. NIGHT BLINDNESS IS COMMON.
- GENETIC TESTING SHOULD BE PERFORMED TO CONFIRM ALL CHM AND X-LINKED RP DIAGNOSES.

SCIENCE IS HOPE ON THE HORIZON!

- GENE THERAPY TRIALS AND CELL REPLACEMENT RESEARCH ARE UNDERWAY!
- PROPER DIAGNOSIS OF THE PATIENT POPULATION IS CRITICAL FOR BOTH RESEARCH AND TREATMENT!



Choroideremia



Retinitis Pigmentosa



Choroideremia
RESEARCH FOUNDATION

CHOROIDEREMIA CURES NEED PATIENTS!



**CHOROIDEREMIA
VISION TUNNELS UNTIL
EVENTUAL BLINDNESS**

PATIENTS NEED YOUR HELP!

**FROM UNDERSTANDING THIS
DISEASE TO ACCESSING DIVERSE
SUPPORT NETWORKS, CHM
PATIENTS NEED YOUR HELP
DIRECTING THEM TO THE
CHOROIDEREMIA RESEARCH
FOUNDATION (CRF)!**

**THE CRF IS AN INTERNATIONAL
ORGANIZATION COMMITTED
TO FUNDING RESEARCH,
ADVOCATING FOR OUR
PATIENTS, AND FACILITATING
STRONG SUPPORT NETWORKS
FOR ALL MEMBERS OF
OUR CHM FAMILY.**

REACH OUT TO YOUR PATIENTS AND HAVE THEM CONTACT US!

(800)210-0233, EXT. 1

INFO@CURECHM.ORG

WWW.CURECHM.ORG

FOR A FULL POWERPOINT ON THE DIFFERENTIAL DIAGNOSIS BETWEEN CHM & RP, PLEASE EMAIL US.